

Document no	Page
6-005	1 (3)
Valid from	Replacing
Feb 4, '03	-
Written by	Approved by QA routines
BQ	-

Name of document	
Usage of Partial update- english	
Product/Activity	
Display module M1S1	
Operation	Any belonging manuals for modules
	-

Partial update of module M1S1

With the new command Display partial image (0x25), it is possible to show selected rows in a picture. The command is used as below.

Display Partial image

Command 0x25

Data field content

	Image #	Start row MSB	Start row LSB	Nr_of_ rows MSB	Nr_of_ rows LSB
Byte #	1	2	3	4	5

Image # The image memory location to be displayed (1-8).

Start row First row of partial image (0-799).

Nr_of_rows Nr of rows to display (1-800).

First choose image number to get picturedata from. Then give startrow number and also number of rows to display.

Usage of partial update

Partial update is best used in combination with partial download. Here follows a description of how to use these features and to get the most out of them.

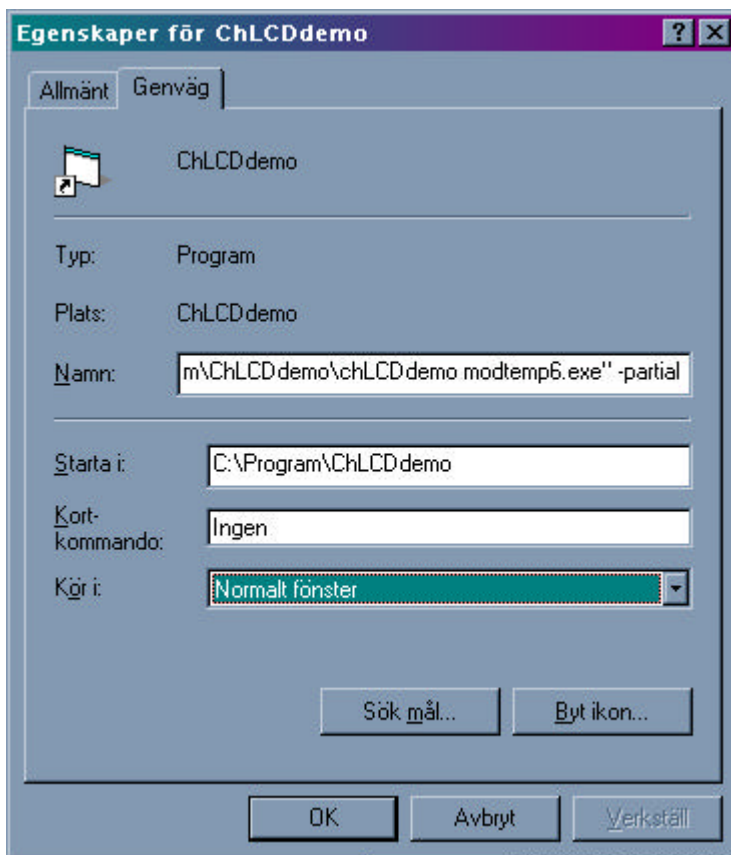
A SVGA picture is built up of 235 packets with 256 bytes in each packet. Normally the fastest way to download a new picture is to compare the new picture with the already downloaded one and then only download the packets with new data. This eliminates redundant downloading of packets with the same content. Since a packet does not contain a whole number of rows the first data byte is seldom the first byte in a row. This can be troublesome with **Display Partial Image** if a memory position is used as "clip board". By downloading the packets above and below the selected rows trash-bytes will be overwritten.

Document no	Page
6-005	2 (3)
Valid from	Replacing
Feb 4, '03	-
Written by	Approved by QA routines
BQ	-

Name of document	
Usage of Partial update- english	
Product/Activity	
Display module M1S1	
Operation	Any belonging manuals for modules
	-

Testprogram

With ChLCDdemo it is possible to test partial update. To access the partial command buttons add the argument **-partial** in the program path, see picture 1.

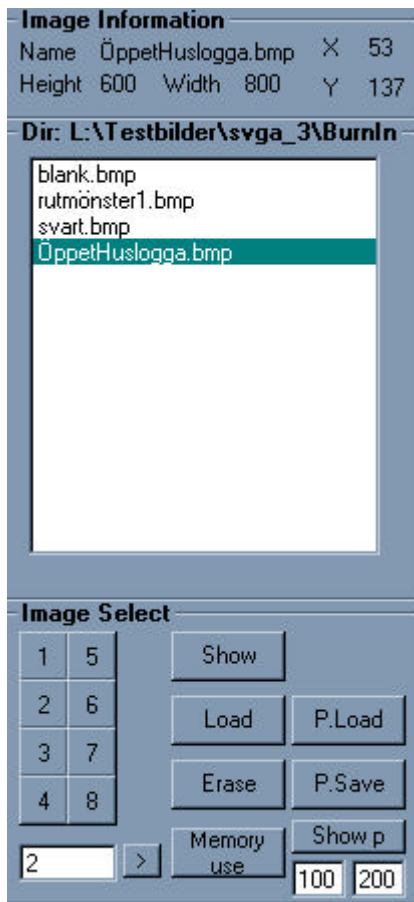


Picture 1. Path to Chlcdemo

New buttons will now appear in the main command window. See picture 2.

Document no	Page
6-005	3 (3)
Valid from	Replacing
Feb 4, '03	-
Written by	Approved by QA routines
BQ	-

Name of document	
Usage of Partial update- english	
Product/Activity	
Display module M1S1	
Operation	Any belonging manuals for modules
	-



Picture 2. Buttonmenu.

The button **P.Save** is used to save the current image in the program window as template. When pressing the **P.Load** button the current image is compared with the template image. The packets, of totally 235, that contain changed data is transmitted to the module. This feature can be used in every standard module in order to minimize transfer time.

The third button **Show p** is used to send command Display Partial image (code 0x25). Enter *Start row* in the left field below the button and the *Number of rows* in the right field. Use the X and Y-coordinats as orientation help. *Note! This command requires a module with Display Partial Image command support. The command is not supported by standard modules!*